

CEO REPORT

SEPTEMBER 2019



OUR MISSION

The Virginia Railway Express, a joint project of the Northern Virginia Transportation Commission and the Potomac Rappahannock Transportation Commission, will provide safe, cost-effective, accessible, reliable, convenient, and customer responsive commuter-oriented rail passenger service. VRE contributes to the economic vitality of its member jurisdictions as an integral part of a balanced, intermodal regional transportation system.



CEO REPORT | SEPTEMBER 2019

TABLE OF CONTENTS

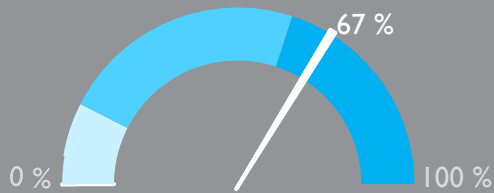
SUCCESS AT A GLANCE	3
ON-TIME PERFORMANCE	4
AVERAGE DAILY RIDERSHIP	6
SUMMONSES ISSUED	7
TRAIN UTILIZATION	8
PARKING UTILIZATION	9
FINANCIAL REPORT	10
FACILITIES UPDATE.....	11
UPCOMING PROCUREMENTS	12
CAPITAL PROJECTS UPDATES	13
PROJECTS PROGRESS REPORT	15



VIRGINIA RAILWAY EXPRESS
A better way. A better life.

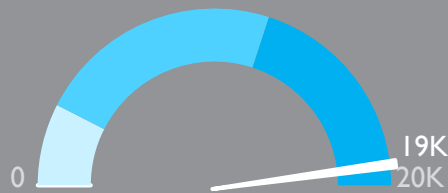


SUCCESS AT A GLANCE



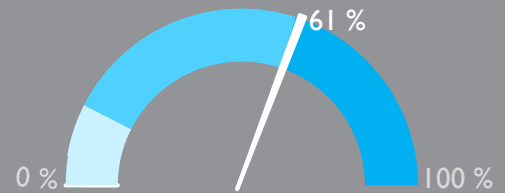
PARKING
UTILIZATION

The total number of parking spaces used in the VRE system during the month, divided by the total number of parking spaces available.



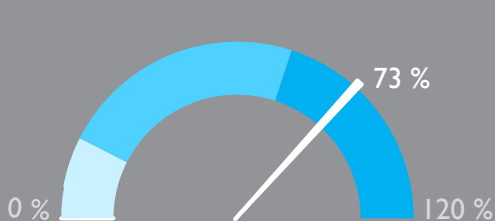
AVERAGE DAILY
RIDERSHIP

The average number of boardings each operating day inclusive of Amtrak Step-Up boardings but excluding "S" schedule operating days.
Same month, previous year: 18,251



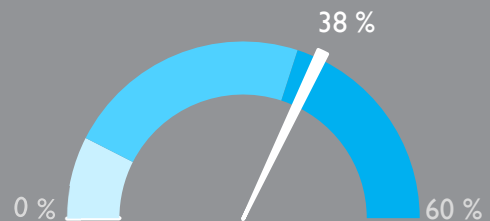
ON-TIME
PERFORMANCE

Percentage of trains that arrive at their destination within five minutes of the schedule.
Same month, previous year: 86%



SYSTEM CAPACITY

The percent of peak hour train seats occupied. The calculation excludes reverse flow and non-peak hour trains.



OPERATING RATIO

The monthly operating revenues divided by the monthly operating expenses, which depicts the percent of operating costs paid by the riders.
Board-established goal: 52%

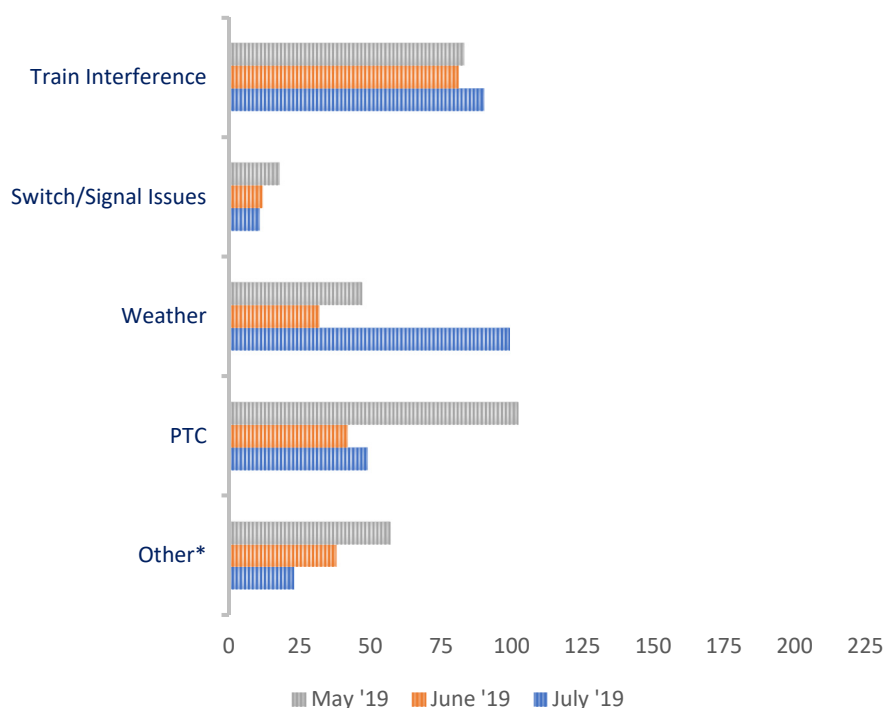
JULY 2019

ON-TIME PERFORMANCE

OUR RECORD

	July 2019	June 2019	July 2018
Manassas Line	69%	69%	77%
Fredericksburg Line	53%	67%	75%
System Wide	61%	68%	76%

PRIMARY REASON FOR DELAY



VRE operated 702 trains in July. Our on-time rate for July was 61 percent.

Two hundred seventy-two trains arrived more than five minutes late to their final destinations. Of those late trains, 106 were on the Manassas Line (39 percent), and 166 were on the Fredericksburg Line (61 percent).

The number of positive train control delays leveled out in July. We experienced seven more PTC-related delays than we did in June, but July had two more service days. While train interference continues to have a significant impact, July saw a marked increase in weather-related impacts. Heat restrictions were in place for 19 of the month's 22 service days.

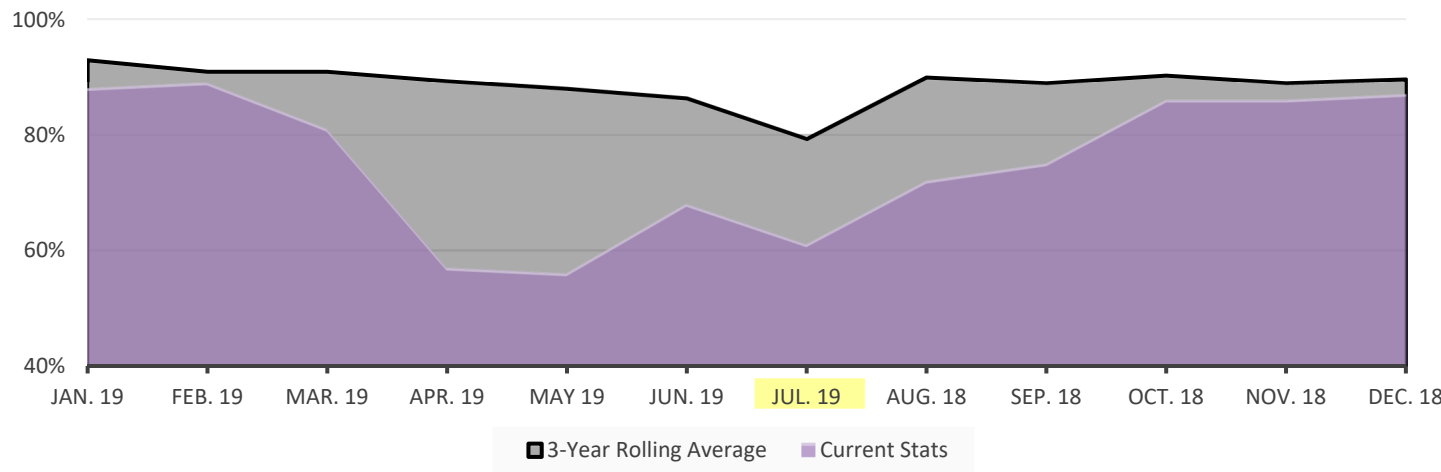
*Includes trains that were delayed due to operational testing and passenger handling.

LATE TRAINS

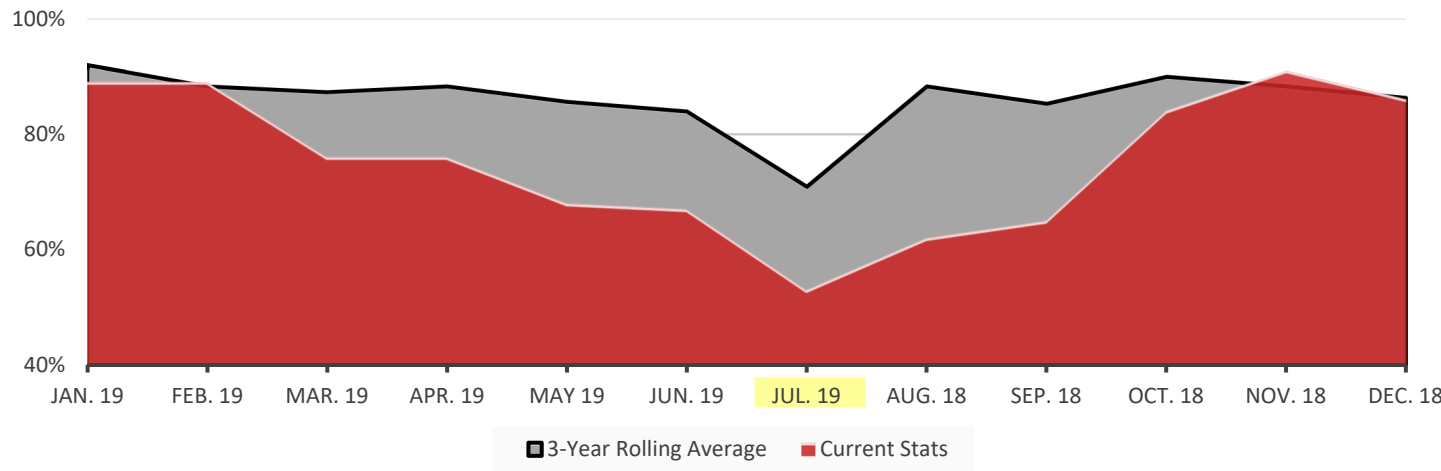
	System Wide			Fredericksburg Line			Manassas Line		
	May	June	July	May	June	July	May	June	July
Total late trains	307	205	272	111	106	166	196	99	106
Average minutes late	23	14	16	25	13	16	22	16	15
Number over 30 minutes	53	14	28	18	4	16	35	10	12
Heat restrictions	8	10	19	8	10	19	0	0	0

ON-TIME PERFORMANCE

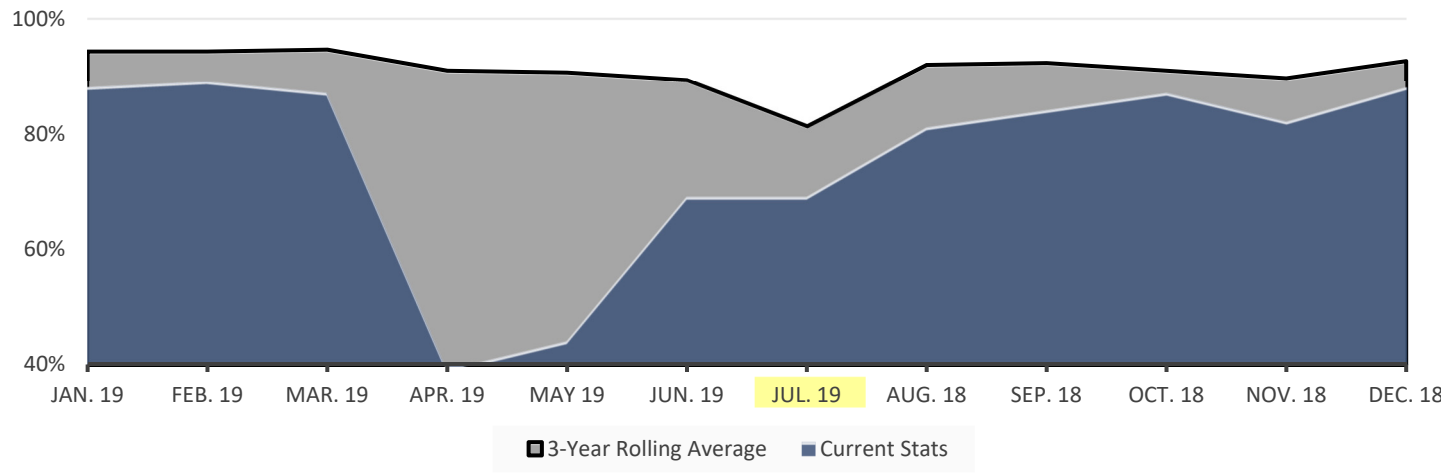
VRE SYSTEM



FREDERICKSBURG LINE

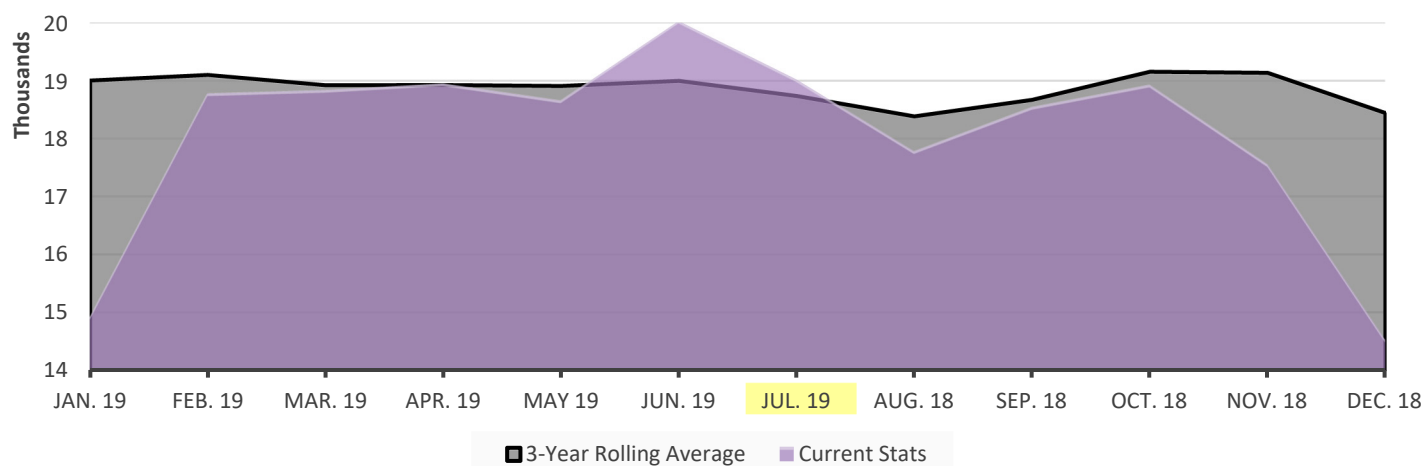


MANASSAS LINE

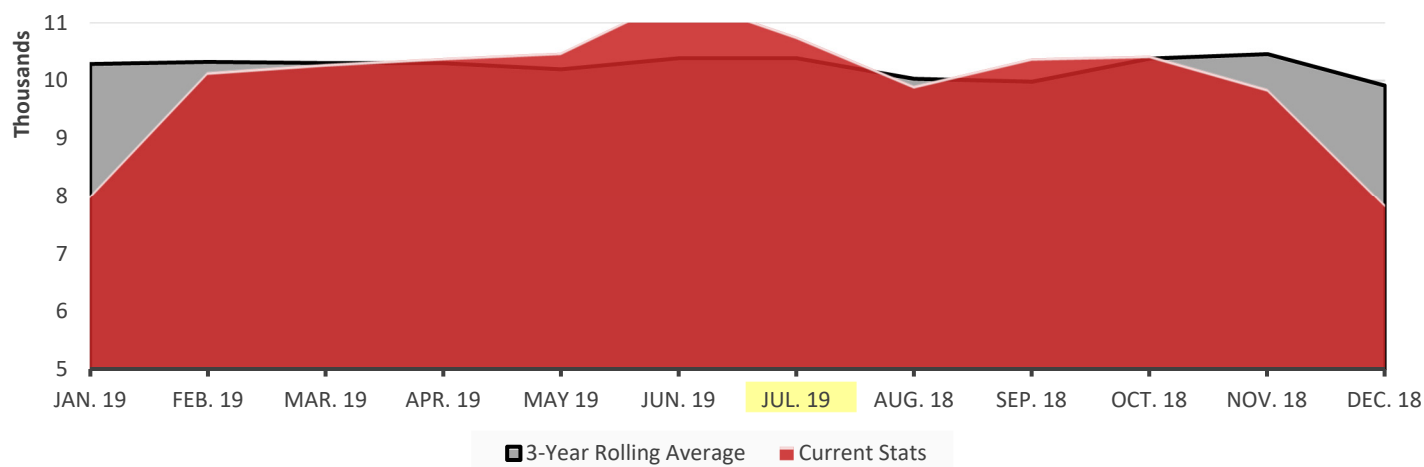


AVERAGE DAILY RIDERSHIP

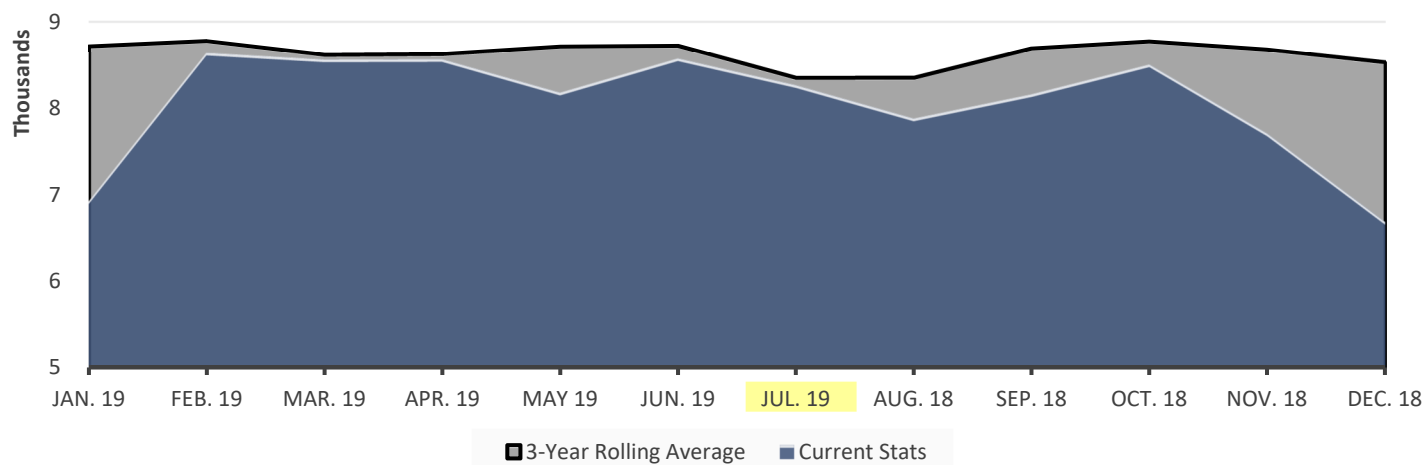
VRE SYSTEM



FREDERICKSBURG LINE



MANASSAS LINE

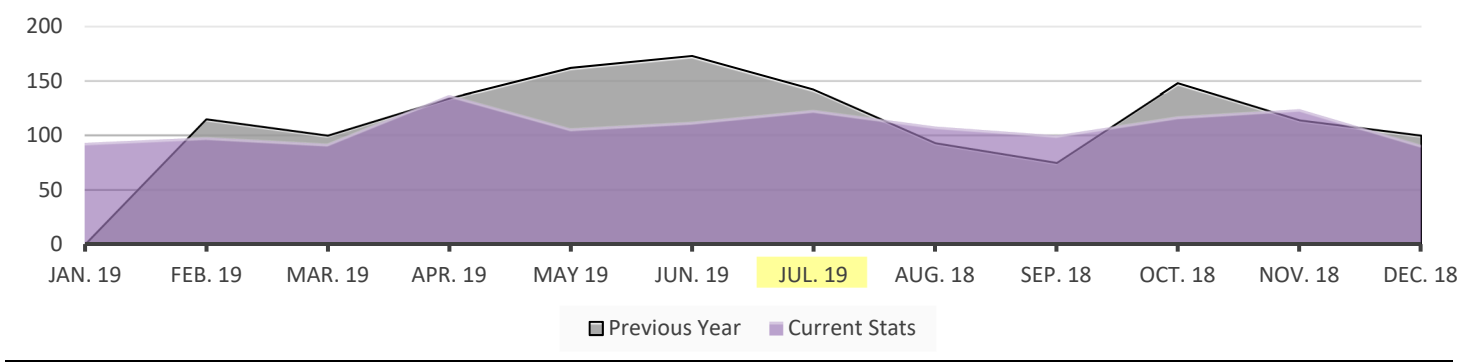


Average daily ridership (ADR) in July was approximately 19,000.

	July 2019	June 2019	July 2018
Monthly Ridership	418,434	400,597	388,306
Average Daily Ridership	19,020	20,030	18,251
Full Service Days	22	20	21
“S” Service Days	0	0	0

SUMMONSES ISSUED

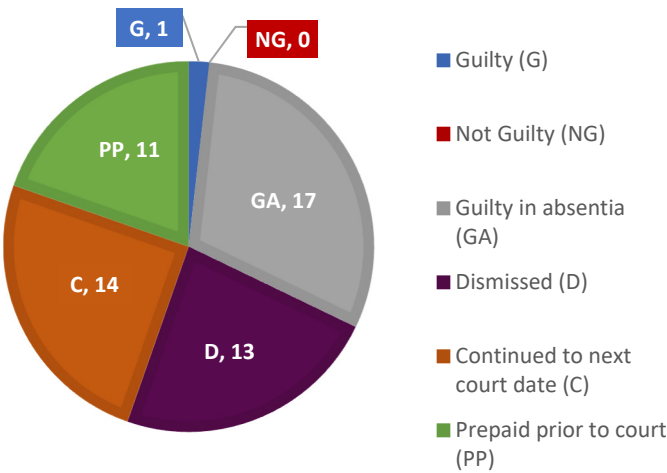
VRE SYSTEM



SUMMONSES WAIVED OUTSIDE OF COURT

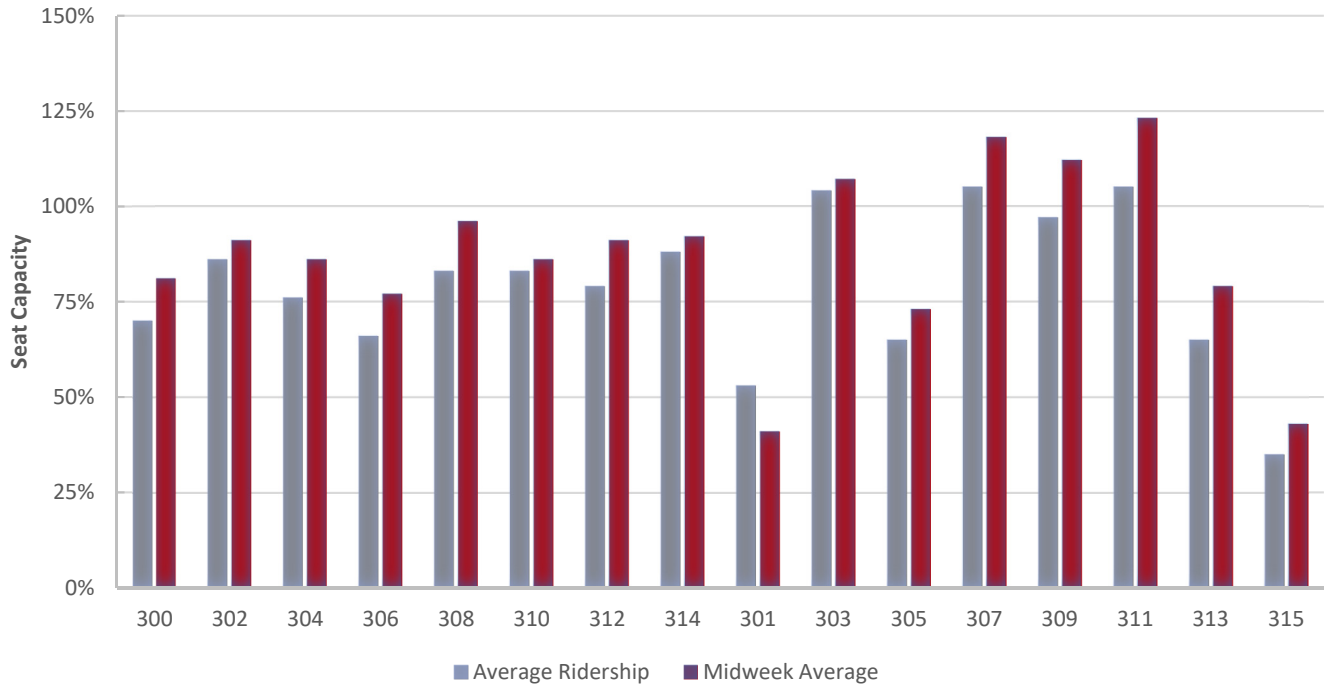
Reason for Dismissal	Occurrences
Passenger showed proof of a monthly ticket	25
One-time courtesy	12
Per the request of the conductor	12
Defective ticket	0
Per Ops Manager	2
Unique circumstances	0
Insufficient information	1
Lost and found ticket	0
Other	2
Total Waived	54

MONTHLY SUMMONSES COURT ACTION

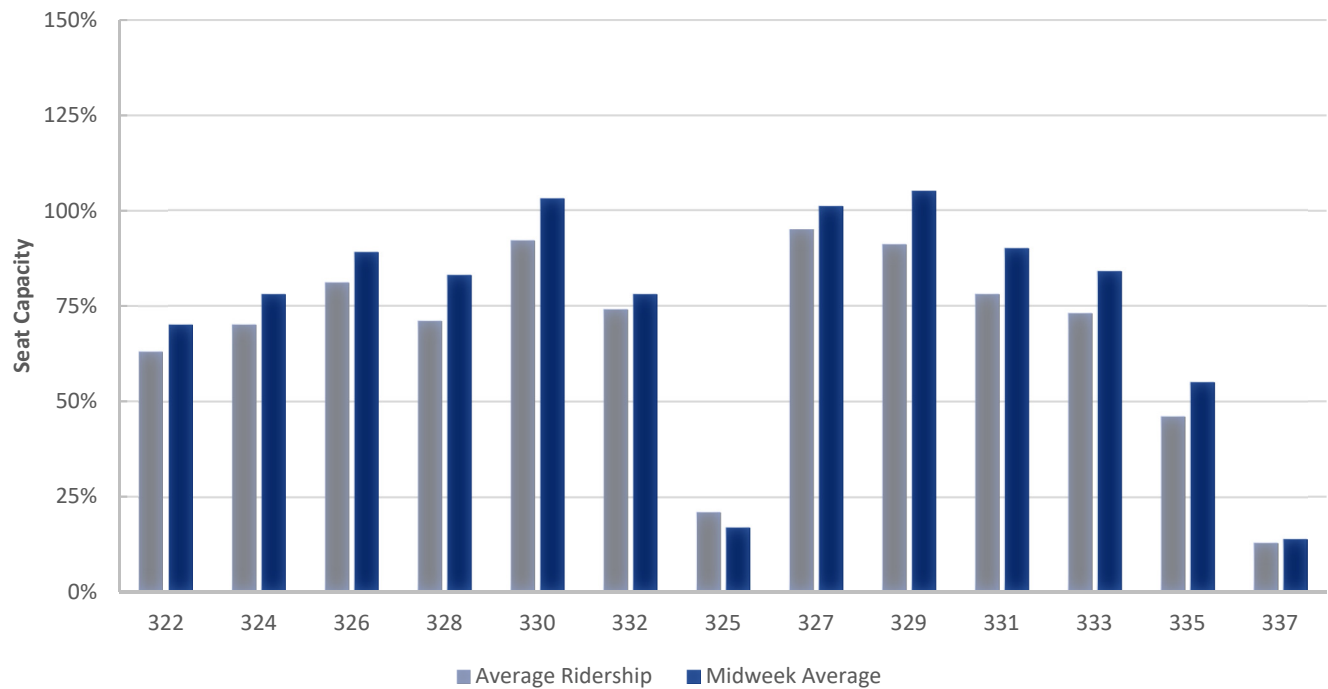


TRAIN UTILIZATION

FREDERICKSBURG LINE

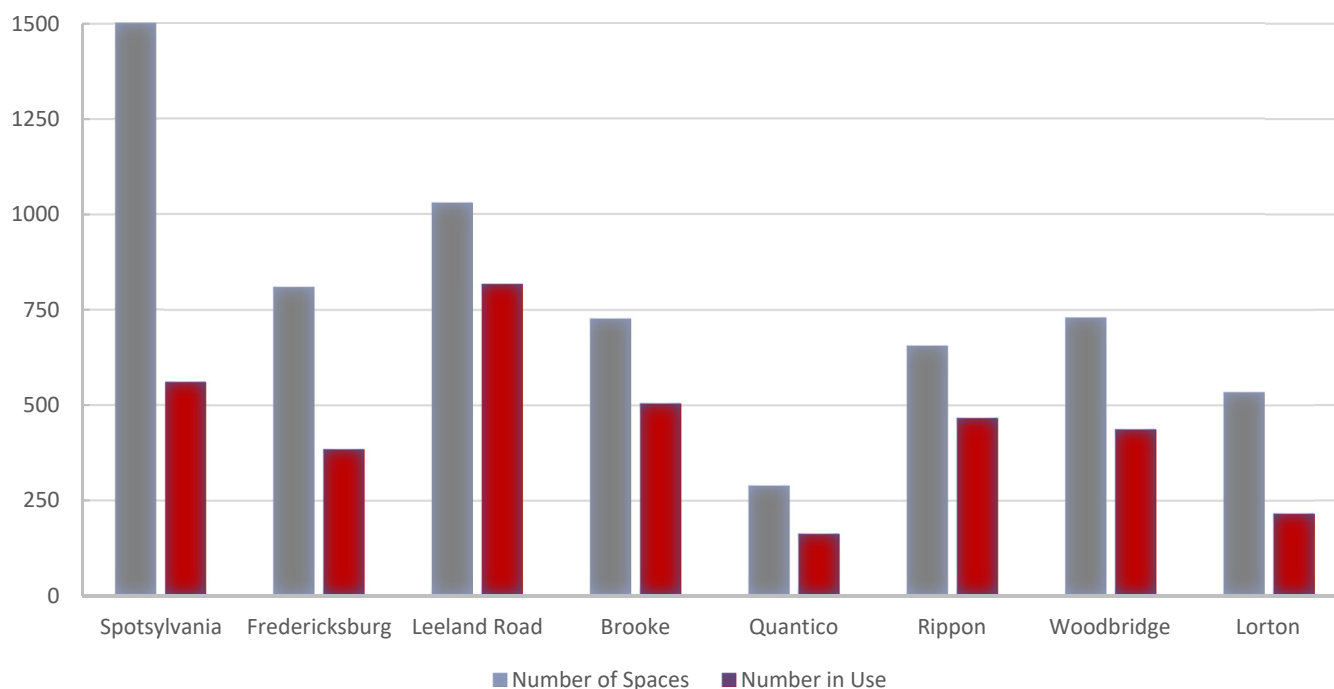


MANASSAS LINE

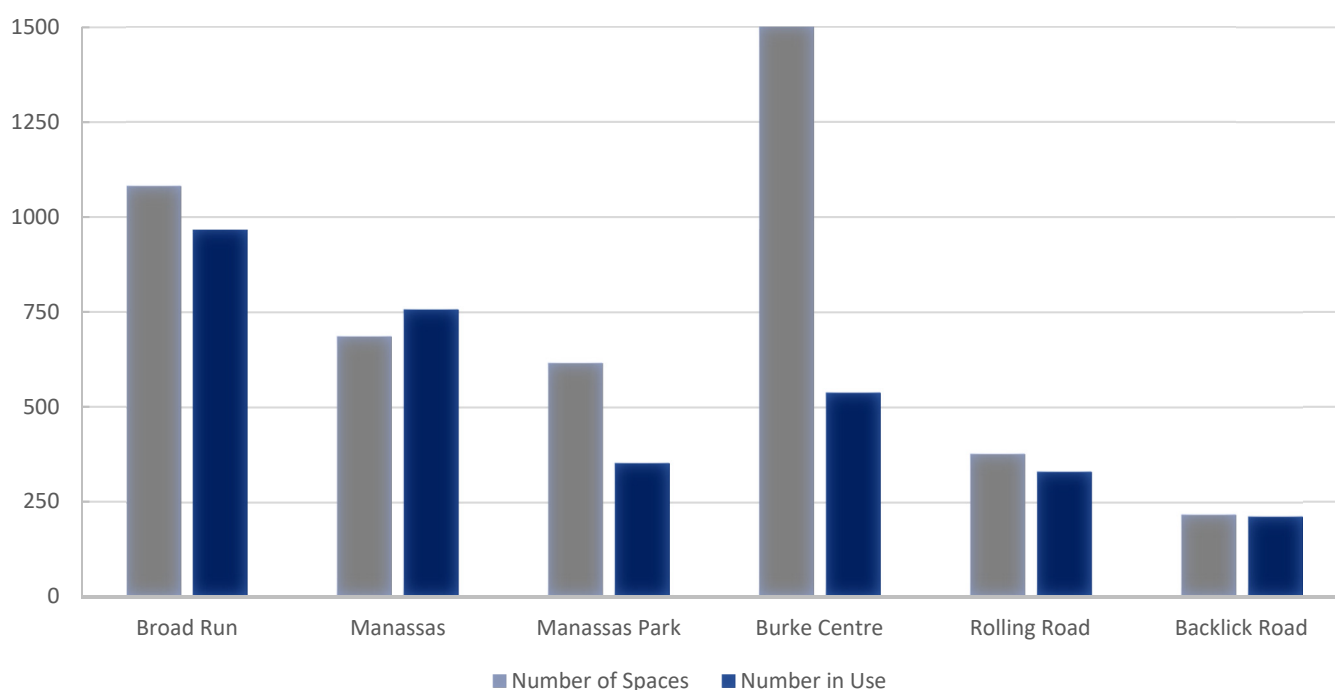


PARKING UTILIZATION

FREDERICKSBURG LINE



MANASSAS LINE



FINANCIAL REPORT

Fare revenue through the first month of fiscal year 2020 is approximately \$29,000 above budget, a favorable variance of 0.8 percent, and is 5.7 percent above the same period in fiscal 2019. Revenue for the period was impacted positively by additional ridership resulting from the shutdown of six stations on Metrorail's Yellow and Blue lines.

VRE's annual liability insurance premium was accounted for in full in July, resulting in a year-to-date operating ratio of 38 percent. Absent this premium, the operating ratio would have been 60 percent. VRE is required to budget a minimum operating ratio of 50 percent.

A summary of fiscal 2020 financial results through July follows, including information on major revenue and expense categories. Please note that these figures are preliminary and unaudited.

FY 2020 Operating Budget Report Month Ended July 31, 2019							
	CURR. MO. ACTUAL	CURR. MO. BUDGET	YTD ACTUAL	YTD BUDGET	YTD \$ VARIANCE	YTD % VARIANCE	TOTAL FY19 BUDGET
Operating Revenue							
Passenger Ticket Revenue	3,853,546	3,824,683	3,853,546	3,824,683	28,863	0.8%	43,810,000
Other Operating Revenue	65,225	19,643	65,225	19,643	45,582	232.1%	225,000
Subtotal Operating Revenue	3,918,771	3,844,325	3,918,771	3,844,325	74,445	1.9%	44,035,000
Jurisdictional Subsidy (1)	9,062,209	9,062,209	9,062,209	9,062,209	-	0.0%	13,230,397
Federal/State/Other Jurisdictional Subsidy	2,699,133	2,646,241	2,699,133	2,646,241	52,892	2.0%	31,462,978
Appropriation from Reserve/Other Income	-	-	-	-	-	0.0%	-
Interest Income	155,808	43,651	155,808	43,651	112,157	256.9%	500,000
Total Operating Revenue	15,835,920	15,596,426	15,835,920	15,596,426	239,494	1.5%	89,228,375
Operating Expenses							
Departmental Operating Expenses	10,435,008	10,480,711	10,435,008	10,480,711	45,704	0.4%	82,991,618
Debt Service	518,500	518,480	518,500	518,480	(21)	0.0%	6,221,757
Other Non-Departmental Expenses	15,000	1,310	15,000	1,310	(13,690)	0.0%	15,000
Total Operating Expenses	10,968,508	11,000,500	10,968,508	11,000,500	31,993	0.3%	89,228,375
Net income (loss) from Operations	4,867,413	4,595,926	4,867,413	4,595,926	271,486		-
Operating Ratio			38%	37%		Budgeted Goal	53% 50%

(1) Total jurisdictional subsidy is \$17,767,748. Portion shown as budgeted is attributed to Operating Fund only.

FACILITIES UPDATE

The following is a status update of VRE facilities projects.

Completed projects:

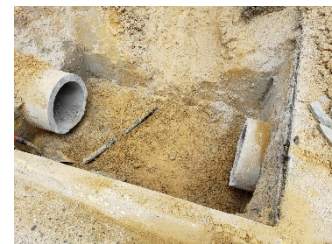
1. Replacement of tactile warning strip at L'Enfant Station
2. Replacement of wooden pedestrian crossing at Alexandria Station
3. Repairs to drainage pipe at Leeland Road Station



New pedestrian crossing at the Alexandria Station

Projects scheduled to be completed this quarter:

1. Installation of electrical conduits and conductors for Variable Messaging System (VMS) at Alexandria and Fredericksburg Stations
2. Repairs to platform concrete at Manassas Station
3. Replacement of Track 8 wayside power electrical conductors at Broad Run Maintenance and Storage Facility
4. Design of Phase 2 renovations to Alexandria Headquarters Suite 202



Drainage pipe repairs at the Leeland Road Station.

Projects scheduled to be initiated this quarter:

1. Design of platform widening at L'Enfant Station
2. Replacement of signage at additional stations (locations to be determined)

Ongoing projects:

1. Development of IFB for modernization of east elevator at Woodbridge Station
2. Development of IFB for canopy roof replacement at Backlick Road Station
3. Replacement of parking lot entrance signs at various stations
4. Replacement of waste and recycling receptacles at various stations

UPCOMING PROCUREMENTS

- Purchase of passenger elevators
- Construction of the Lifecycle Overhaul and Upgrade Facility
- Construction management services for the Lifecycle Overhaul and Upgrade Facility
- Program management services
- Canopy roof replacement at the Backlick Road Station
- Modernization of VRE Woodbridge Station east elevator
- Passenger car wheelchair lift assemblies
- Seat bottoms for passenger cars
- Construction of Benchmark Road slope stabilization (Hamilton to Crossroads closeout)
- Construction of Rolling Road Station platform extension
- Purchase of LED light fixtures
- Construction of L'Enfant south storage track wayside power
- Variable Messaging System replacement
- Tactile strip replacements
- Pavement repairs and striping at the Rippon and Leeland Road stations and Fredericksburg Lot G
- Franconia-Springfield Station painting services
- State government relations services
- Website management services
- Purchase of forklift trucks
- Final design services for VRE Broad Run expansion
- Email and text message communication system

CAPITAL PROJECTS UPDATES

The following is a status update of VRE capital projects.

Completed projects or major project milestones:

1. Long Bridge Project Environmental Impact Statement (*study by others*) – Draft environmental impact statement, which identifies a preferred alternative and examines its impacts, was released and published in the Federal Register; public comment period runs through October 28, with a public hearing on October 22.
2. New York Avenue Midday Storage Replacement Facility – Updated and communicated environmental approval to project stakeholders; continuing due-diligence activities on potential property acquisitions, including title and appraisal work as well as preliminary design effort and collaboration with Amtrak.

Projects or project phases scheduled to be completed this quarter:

3. Franconia-Springfield Station Improvements (FRS) 90% design plans
4. Lorton Station Second Platform (LOR) 90% design plans
5. Rippon Station Improvements (RIP) 30% design plans (Final)
6. Brooke Station Improvements (BKV) 30% design plans (Final)
7. Brooke Station Improvements (BKV) Environmental Documentation
8. Leeland Road Station Improvements (LLR) 30% design plans (Final)
9. Leeland Road Station Second Platform (LLR) Environmental Documentation
10. Construction of temporary platform for Quantico Station Improvements
11. Broad Run Expansion (BRX) Section 106 Consultation

Projects or project phases scheduled to be initiated this quarter:

12. IFB for construction of Rolling Road Station Improvements
13. Construction of temporary platform for Quantico Station Improvements
14. Request for proposals (RFP) advertised for LOU Construction Management
15. Crystal City Station Improvements 30% Design Plans and environmental documentation
16. IFB for construction of Benchmark Road Slope Stabilization (Hamilton to Crossroads closeout)

Ongoing projects:

17. Broad Run Expansion (BRX)
18. Manassas Park Parking Improvements
19. Rolling Road Station Improvements
20. Crossroads Maintenance and Storage Facility (MSF) – land acquisition
21. Lifecycle Overhaul & Upgrade Facility (LOU)
22. Benchmark Road Slope Stabilization (Hamilton to Crossroads closeout)
23. Leeland Road Station Improvements
24. Brooke Station Improvements
25. Quantico Station Improvements
26. Rippon Station Improvements
27. Lorton Station Second Platform
28. Franconia-Springfield Station Improvements
29. Alexandria Station Improvements
30. Alexandria Station Track I Access (Slaters Lane)
31. Crystal City Station Improvements
32. L'Enfant Train Storage Track - South
33. L'Enfant Station Improvements
34. New York Avenue Midday Storage Facility
35. Potomac Shores VRE Station – *design by others*
36. Washington Union Station Improvements Environmental Impact Statement – *study by others*
37. DC2RVA Environmental Impact Statement – *study by others*

Projects Progress Report Follows

PASSENGER

PROJECT	DESCRIPTION	PHASE						
		CD	PD	EC	RW	FD	CN	
Alexandria Station Improvements	Eliminate at-grade track crossing, add elevators, modify platforms.	◆	◆	◆	N/A	●		
	Modify Slaters Lane Interlocking for passenger trains on Track #1.	◆	◆	◆	N/A	●		
	Extend and widen East Platform and elevate West Platform.	◆	◆	◆	N/A	●		
Franconia-Springfield Station Improvements	Extend both platforms and widen East Platform for future third track. ◆	◆	◆	◆	N/A	●		
Lorton Station Improvements	Construct new second platform with pedestrian overpass. ◆	◆	◆	◆	N/A	●		
Rippon Station Improvements	Extend existing platform, construct new second platform with pedestrian overpass. ◆	◆	●	●	N/A			
Potomac Shores Station Improvements	New VRE station and parking in Prince William County provided by private developer.	◆	●	◆	N/A			
Quantico Station Improvements	Extend existing platform, construct new second platform with pedestrian overpass.	◆	◆	◆	N/A	●		
Brooke Station Improvements	Extend existing platform, construct new second platform with pedestrian overpass. ◆	◆	●	●	N/A			
Leeland Road Station Improvements	Extend existing platform, construct new second platform with pedestrian overpass. ◆	◆	●	●	N/A			
Manassas Park Parking Improvements	Parking garage to increase parking capacity to 1,100 spaces.	◆	◆	●	N/A			
Rolling Road Station Improvements	Extend existing platform and rehabilitate existing station	◆	◆	◆	N/A	●	●	
Crystal City Station Improvements	Replace existing side platform with new, longer island platform.	◆	●	●	N/A			
L'Enfant Station Improvements	Replace existing platform with wider, longer island platform. Add fourth track (VA-LE)	◆			N/A			

PHASE: CD - Conceptual Design PE - Preliminary Engineering EC - Environment Clearance RW - Right of Way Acquisition FD - Final Design CN - Construction

STATUS: ◆ Completed ● Underway ■ On Hold ◆ part of the "Penta-Platform" program

¹ Total project cost estimate in adopted FY2020 CIP Budget; percentage complete based on VRE Operations Board authorization

² Does not include minor (< \$50,000) operating expenditures

* \$2,181,630 authorization divided across five "Penta-Platform" program stations

ESTIMATED COSTS (\$)						STATUS	
Total ¹	Funded	Unfunded	Authorized	Expended ²	Percent Complete ¹	Project Completion Date	
31,875,014	31,875,014	-	2,382,759	2,193,257	90%	4th QTR 2020	● Design underway. Stakeholder meetings held 3/1 and 4/3.
7,000,000	7,000,000	-	467,500	270,487	60%	2nd QTR 2019	● Materials continue to be delivered. Assembly of cross-over has begun.
2,400,000	400,000	2,000,000	-	-	5%	4th QTR 2020	● Design work on east platform only; west platform improvements unfunded.
13,000,000	13,000,000	-	*	527,007	35%	4th QTR 2022	● FD underway with anticipated completion 4th QTR 2019.
16,150,000	16,150,000	-	*	712,703	35%	4th QTR 2022	● FD underway with anticipated completion 4th QTR 2019.
16,634,793	16,634,793	-	*	386,591	25%	4th QTR 2023	● PE design/EC completion pending CSXT design review with anticipated completion in 4th QTR 2019.
No costs for VRE. Private developer providing station.					10%	TBD	● Potomac Shores VRE Station design underway to include parking structure.
18,372,949	18,372,949	0	111,374.24	830,833	30%	TBD	● FD start 1st QTR 2019. SMART SCALE grant agreement pending.
23,391,019	23,391,019	-	*	369,262	25%	4th QTR 2023	● DRPT LONP received; REF grant pending. PE design/EC anticipated completion 4th QTR 2019.
15,527,090	15,527,090	-	*	332,514	25%	4th QTR 2023	● DRPT LONP received; REF grant pending. PE design/EC anticipated completion 4th QTR 2019.
25,983,000	25,983,000	0	2,238,144	670,225	30%	4th QTR 2022	● Meeting held with Governing Body on 4/3. FD continues.
2,000,000	2,000,000	-	640,503	418,887	70%	3rd QTR 2020	● Invitation for Bids (IFB) pending start 2019 construction season and NS Construction Agreement.
49,940,000	19,098,463	30,841,537	399,121	393,642	100%	2nd QTR 2023	■ DRPT LONP received. RFP posted for completion of PE & EC, with FD as an optional task.
70,650,000	62,465,721	8,184,279	130,501	65,150	50%	2nd QTR 2023	● DRPT LONP received. Real estate research in progress under LONP.

TRACK AND INFRASTRUCTURE

PROJECT	DESCRIPTION	PHASE					
		CD	PD	EC	RW	FD	CN
Hamilton-to-Crossroads Third Track	2¼-miles of new third track with CSXT design and construction of signal and track tie-ins.	◆	◆	◆	N/A	◆	◆

MAINTENANCE AND STORAGE FACILITIES

L'Enfant Train Storage Track - South	Conversion of CSXT Temporary Track to VRE Storage Track (1,350 feet) and Associated Signal Work	◆	◆	◆	N/A	●	●
Lifecycle Overhaul & Upgrade Facility	New LOU facility to be added to the Crossroads MSF.	◆	◆	◆	N/A	◆	■
Crossroads Maintenance and Storage Facility - Land Acquisition	Acquisition of 16.5 acres of land, construction of two storage tracks and related site improvements.	◆	N/A	N/A	●	N/A	N/A
New York Avenue Midday Storage Facility	Midday storage facility replacement for Ivy City storage facility.	◆	●	●	●		

ROLLING STOCK

Passenger Railcar Procurement	Acquisition of 29 new railcars.	◆	N/A	N/A	N/A	◆	◆
Positive Train Control	Implement Positive Train Control for all VRE locomotives and control cars.	◆	N/A	N/A	N/A	◆	●

PLANNING, COMMUNICATIONS AND IT










Broad Run Expansion (was Gainesville-Haymarket Extension)	NEPA and PE for expanding commuter rail service capacity in Western Prince William County	◆	●	●	-	-	-
Mobile Ticketing	Implementation of a new mobile ticketing system.	◆	N/A	N/A	N/A	◆	●

PHASE: CD - Conceptual Design PE - Preliminary Engineering EC - Environment Clearance RW - Right of Way Acquisition FD - Final Design CN - Construction

STATUS: ◆ Completed ● Underway ■ On Hold

¹ Total project cost estimate in adopted FY2020 CIP Budget; percentage complete based on VRE Operations Board authorization

² Does not include minor (< \$50,000) operating expenditures

Total ¹	ESTIMATED COSTS (\$)				Percent Complete ¹	Project Completion Date	STATUS	
	Funded	Unfunded	Authorized	Expended ²				
32,500,000	32,500,000	-	33,285,519	30,578,003	90%	3rd QTR 2018		Close-out pending repair of storm damage to embankment.
3,965,000	3,965,000	-	2,937,323	1,699,610	60%	4th QTR 2019		CSXT Construction Agreement received. CM underway.
38,183,632	38,183,632	-	3,176,039	2,143,583	70%	TBD		Completion of FD pending completion of land acquisition.
2,950,000	2,950,000	-	2,950,000	156,549	5%	TBD		Spotsylvania County Planning and Zoning approved special use permit with follow-up by County Board.
89,666,508	89,666,508	-	3,588,305	1,680,412	50%	4th QTR 2020		Preliminary design continues as well as due diligence as part of real estate acquisition; NEPA documentation approved by FTA.
75,264,693	75,264,693	-	69,457,809	47,915,644	99%	4th QTR 2020		All cars received. Completion date reflects end of warranty period.
14,191,833	14,191,833	-	10,294,079	7,984,451	95%	4th QTR 2018		Implementation Completed. Final stabilization and familiarization phase in process.
110,700,000	82,526,398	28,173,602	5,855,650	4,539,446	80%	4th QTR 2024		PE design and EC underway. Property acquisition due diligence underway.
3,510,307	3,510,307	-	3,510,627	2,282,853	70%	3rd QTR 2019		Big Commerce/Moovel collaboration underway for web based ticketing portal. Uplift to new platform scheduled for mid-summer.



VIRGINIA RAILWAY EXPRESS

1500 KING STREET, SUITE 202 • ALEXANDRIA, VA 22314 • 703.684.1001

VRE.ORG

